



WHITLOCK-MATERIAL HANDLING

AD SERIES MINI CABINET DRYERS



AD-M Machine Mount Dryer with Hopper



AD Floor Mount Model Desiccant Dryer

STANDARD FEATURES

- Compact size with full size performance
- Standard off-the-shelf programmable logic controller with 1/16 DIN digital temperature control
 - Standard units 180°F to 250°F
 - Low temperature units 120°F to 180°F
 - High temperature units 250°F to 400°F
- Control system complies with NFPA79 and UL/CUL for maximum safety, including electrical disconnect and branch fusing
- Dual bed, closed process loop design uses 13X desiccant and a unique air flow circuit
- -40° dewpoint in high humidity environments (in excess of 150 grain moisture level)
- Removes up to 1% of moisture content by weight
- New cabinet style design for maximum safety
- Stainless steel desiccant cans and heater boxes
- High-efficiency 1 micron filter with easy accessibility
- Electric switching valve—no compressed air required
- Energy-efficient, high pressure regenerative blower provides full-rated air flow to process: 15, 30 and 60 CFM (25, 50 and 100 m³/hr)
- Premium quality, low watt-density Incoloy[®] heaters for dependable service and long life
- CE models available
- 460/3/60 supply voltage—others available



1100 E Woodfield Road
Schaumburg, IL 60173 USA
Tel. 847-273-7700 Fax 847-273-7804



WHITLOCK/
MATERIAL
HANDLING



HEAT & COOL



BLEND &
RECLAIM



NELMOR/
GRANULATE



DOWNSTREAM
EXTRUSION



AUTOMATE



SYSTEMS
CONTRACTING



SERVICE



WHITLOCK-MATERIAL HANDLING

AD SERIES MINI CABINET DRYERS

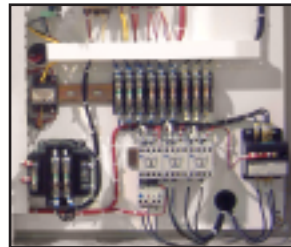


OPTIONS

- Heavy-duty 4" casters
- Low heat operation 120°F to 180°F (includes a pre-cooler to cool dry air before entering the process heater)
- High heat operation 250°F to 400°F (includes insulated process delivery air hose and a return air after-cooler to maximize the efficiency of the dryer)
- Plasticizer trap with stainless steel housing
- After-cooler
- CE models available
- Any three-phase supply voltage
- Portable carts
- AP1 PLC-based control system with touch-screen
- NOMAD portable drying systems with integral conveying to process machine(s)



The dual bed design uses 13X desiccant and removes up to 1% of moisture content by weight.



All AD control systems include an electrical disconnect and branch fusing for maximum safety.



The dryer and hopper can also be mounted on a portable cart for maximum versatility.

MACHINE MOUNT DRYERS ALSO INCLUDE

- Machine mount adapter with drain
- Interconnecting hose and clamps

FLOOR MOUNT DRYERS ALSO INCLUDE

- 12' high-temperature silicone hose and clamps for process air
- 12' standard dryer hose and clamps for return air
- Rubber feet



1100 E Woodfield Road
Schaumburg, IL 60173 USA
Tel. 847-273-7700 Fax 847-273-7804

www.aecinternet.com





WHITLOCK-MATERIAL HANDLING

AD SERIES MINI CABINET DRYERS



The standard control system features digital temperature control.

STANDARD CONTROL SYSTEM FEATURES

- Off-the-shelf 1/16 DIN temperature controller with auto tune and PID
- Programmable logic based control system
- Enclosure meets NFPA 79, UL and CUL electrical standards
- Non-fused disconnect
- High process temperature alarm light
- Temperature controlled regeneration with safety

STANDARD CONTROL SYSTEM OPTIONS

- Audible alarm with silence button
- Digital dewpoint monitor to -40°F



The AP1 PLC controlled system includes a touch-screen interface.

AP1 CONTROLLER FEATURES

- Touch-screen interface provides clear information about desiccant bed regeneration, process temperature, and dewpoint
- Off-the-shelf programmable controller monitors and controls the drying and conveying system
- Allows simple start-up, shut-down, and adjustment of drying and conveying parameters (NOMAD)
- Integral PID temperature control with display of setpoint and actual process temperature
- Display of "actual" dewpoint
- Alarm indication also includes high temperature conditions, dirty filters, and heater failure
- Dryer "auto shutdown" sequence
- Loop break alarm
- 7 day timer
- Material over-drying protection

AP1 OPTION

- Ethernet module



1100 E Woodfield Road
Schaumburg, IL 60173 USA
Tel. 847-273-7700 Fax 847-273-7804





WHITLOCK-MATERIAL HANDLING

SD SERIES MASS FLOW DRYING HOPPERS



SD SERIES SMALL DRYING HOPPERS

SD Series drying hoppers are available in machine-mount and floor-mount configurations. They feature unique mass-flow design, full hopper insulation, and slide gate shut-off. Large door allows for easy cleanout.

STANDARD FEATURES

- Unique mass flow design
- Stainless steel construction (inside and out)
- Hinged access door (3.0 cu. ft. [85 liter] and larger models) (Hinged access door on 1.7 cu. ft. [50 liter] model is optional)
- Dual-wall insulated cylinder and cone section
- Slide gate
- Extended length sight glass on the hopper door

OPTIONAL FEATURES

- Handle kit with casters for floor stand (SD 0.40 - SD 9.0 floor-mount models only)
- Floor stand (less casters)
- Cart to mount 1 drying hopper and 1 AD/ASD/AC/ACM Series dryer
- Cover selections: SRC/SLC, SRH/SRL, manual fill, or blank
- Hopper loader mounting bracket
- Gaylord fill stand, including slide gate. Requires 50" (127 cm) clearance
- Adjustable proximity switch
- Flange with special mounting holes
- Cover with special bolt pattern
- Drain port (standard for machine mount units)



1100 E Woodfield Road
Schaumburg, IL 60173 USA
Tel. 847-273-7700 Fax 847-273-7804



HEAT & COOL



BLEND & RECLAIM



NELMOR/
GRANULATE



DOWNSTREAM
EXTRUSION



AUTOMATE



SYSTEMS
CONTRACTING



SERVICE