



LORANDI&MOTION



LORANDI SILOS

MATERIAL HANDLING SOLUTIONS

Lorandi Silos è anche costruttore di silos in alluminio e acciaio inossidabile.

Lorandi Silos is also a producer of stainless steel and aluminium silos.

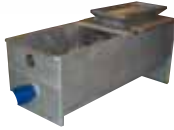


www.lorandisilos.it



MISCELATORI PER MATERIE PLASTICHE
MIXERS FOR PLASTIC

4



MIX ORIZZONTALE DA 2500 LITRI
HORIZONTAL MIX 2500 LITRES

7



SEPARATORE "TARARA"
SEPARATOR "TARARA"

8



PREPULITORI
SEPARATORS

10



REGGISACCONI TELESCOPICI
STRUCTURES FOR SACKS

12



GRUPPO DI CARICO SILOS
SILOS LOADING SYSTEM

14



COCLEE
CONVEYOR SCREWS

16



TRAMOGGE DI STOCCAGGIO
HOPPERS

17



VENTILATORI
BLOWERS

18



CABINA ACUSTICA
ACOUSTIC CABIN

19



INIETTORI E VALVOLE STELLARI
INJECTORS AND ROTARY VALVES

20



SISTEMA DI TUBAZIONI
FASTCLIP PIPING SYSTEM WITH ACCESSORIES

21

MISCELATORI PER MATERIE PLASTICHE

MIXERS FOR PLASTIC MATERIALS



Quadro elettrico con pesatura
Electric control box with weighing cells



STANDARD



***OPTIONAL**



* scarico posteriore basso con valvola in all. manuale o pneumatica con attacchi FC Ø160 o Ø210

MISCELATORI LORANDI

Possibilità di pesatura mediante celle di carico posizionate sotto le gambe

Possibility of weighing using cells under the legs

Possibilità di misure speciali fuori standard e di costruzioni in acciaio inox

Possibility to have out of standard sizes and stainless steel manufactured

A richiesta versioni speciali per trasporto in container

On request, special version to be putted in container

TIPO	LITRI	KG. *	A	B	C	D	E	F	G
MVL 2	350	200	2240	800	600	150	850	150	610
MVL 5	850	500	2630	1150	670	200	850	200	685
MVL 10	1650	1000	2825	1600	700	250	850	200	800
MVL 15	2450	1500	3250	1600	700	250	850	200	800
MVL 20	3600	2000	3850	1600	750	250	900	200	800
MVL 50	5000	3000	4200	1900	750	320	800	200	1000
MVL 80	8000	4800	4600	2350	750	320	800	200	1000
MVL 100	10000	6000	5100	2350	750	320	800	200	1000
MVL 140	14000	8400	5650	2450	750	320	800	200	1000
MVL 160	16000	9600	6200	2450	750	320	800	200	1000
MVL 180	18000	10700	6500	2450	750	350	800	200	1000
MVL 200	20000	13000	7100	2450	1000	400	800	200	1000
MVL 260	26000	12000	7000	2800	920	400	1200	200	1000
MVL 280	28000	16800	7700	2950	1050	400	1150	200	1000

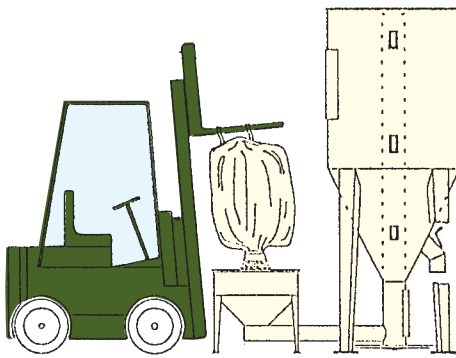
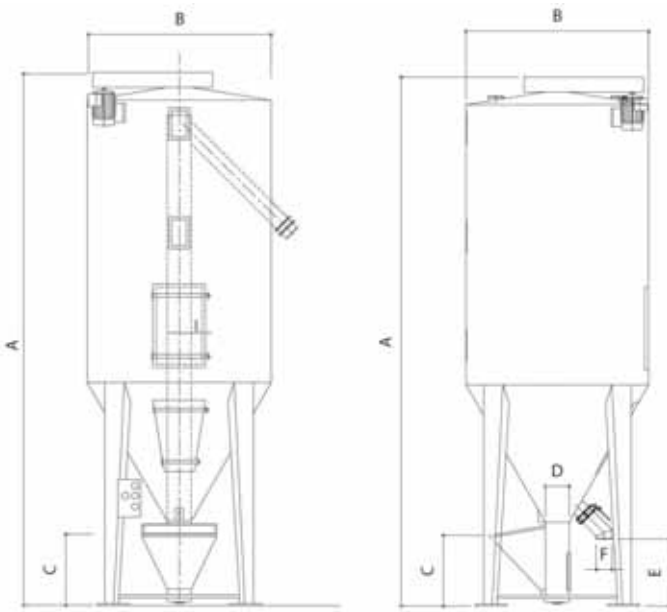
I dati e le illustrazioni del presente catalogo sono indicativi e possono essere variati in qualsiasi momento.

* Il dimensionamento della macchina è stato eseguito tenendo conto di un peso specifico del materiale sciolto di 0,6 ton/mc.

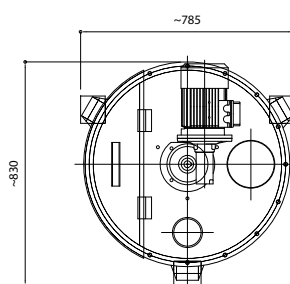
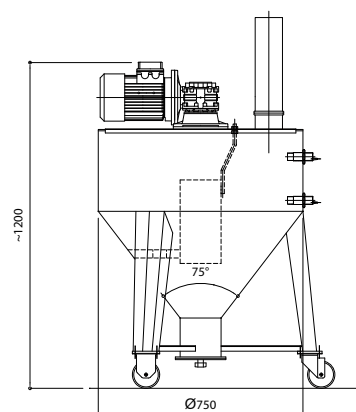
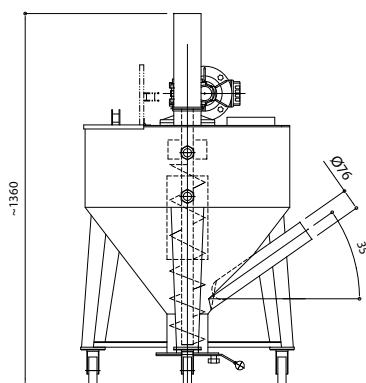
The kg are calculated with a specific weigh of the material of 0,6 ton/cm.

MISCELATORI PER MATERIE PLASTICHE

MIXERS FOR PLASTIC MATERIALS



MINIMIX LMM 200 LITERS ALSO AVAILABLE IN STAINLESS STEEL



MISCELATORI PER MATERIE PLASTICHE MIXERS FOR PLASTIC MATERIALS

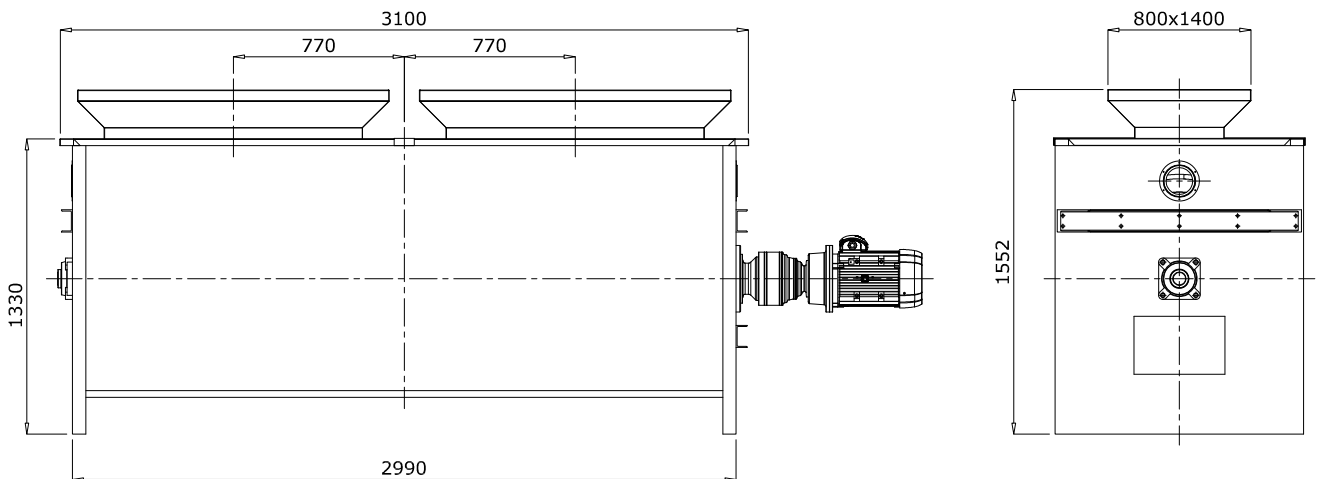


MISCELATORE ORIZZONTALE DA 2500 LITRI

HORIZONTAL MIX 2500 LITRES

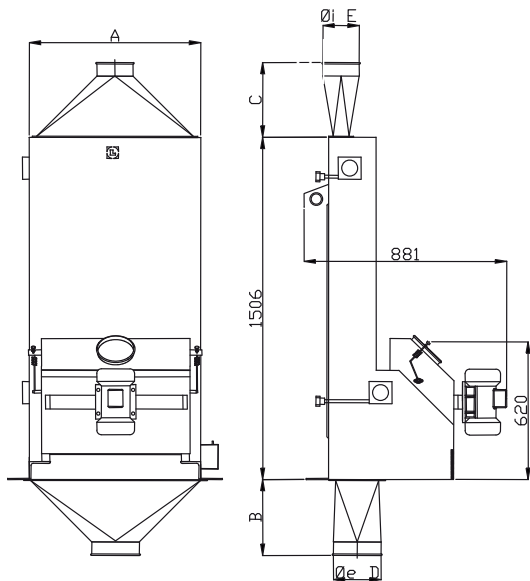


Disponibile in versione AISI 304 e acciaio verniciato
Available in Stainless steel or Painted steel version

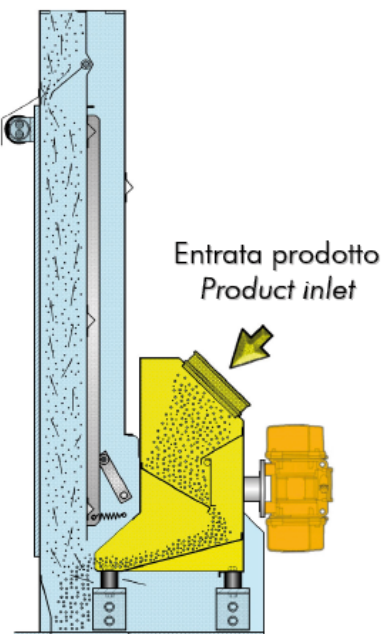


SEPARATORE "TARARA" SEPARATOR "TARARA"

VENTILATORE 4 Kw BLOWER 4 Kw



SISTEMA DI PULIZIA E SEPARAZIONE
PER GRANULI, POLVERI E FILACCI "TARARA"
SEPARATING SYSTEM "TARARA" FOR GRANULES,
DUST AND STRIPES



Versione Inox
Stainless steel
version

Modello	DIMENSIONI					Capacità massima T/H Granuli di plastica	Potenza motovibratore		Potenza lampada KW	Peso netto Kg. versione acciaio al carbonio
	A	B	C	Øe	Øi		50Hz	60Hz		
TRVL 075	756	485	400	120 ÷ 150	270	4*	1X0.17	1X0.17	0.011	190

Dimensioni in mm, indicative e non impegnative. Dim. flangiature a richiesta.
The dimensions in mm are indicative but not binding.

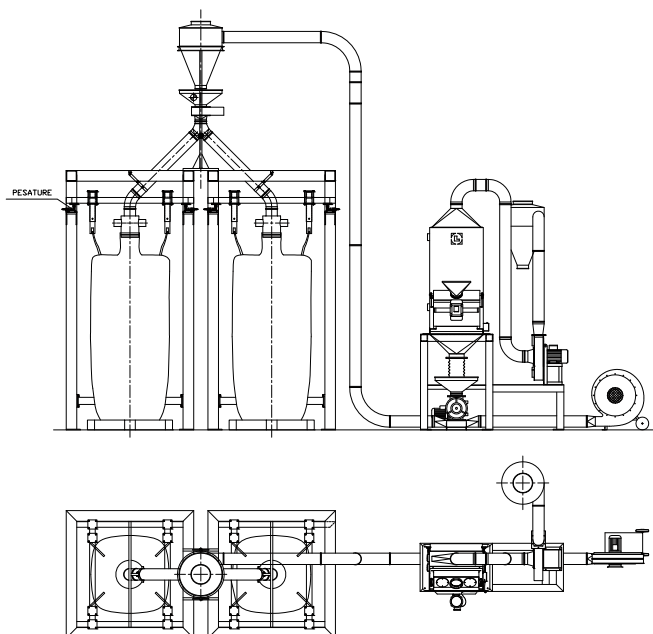
* Calcolate con peso specifico 0.65 Kg/dm³.

* Production calculated with a specific weigh of 0.65 Kg/dm³.

SEPARATORE "TARARA" SEPARATOR "TARARA"

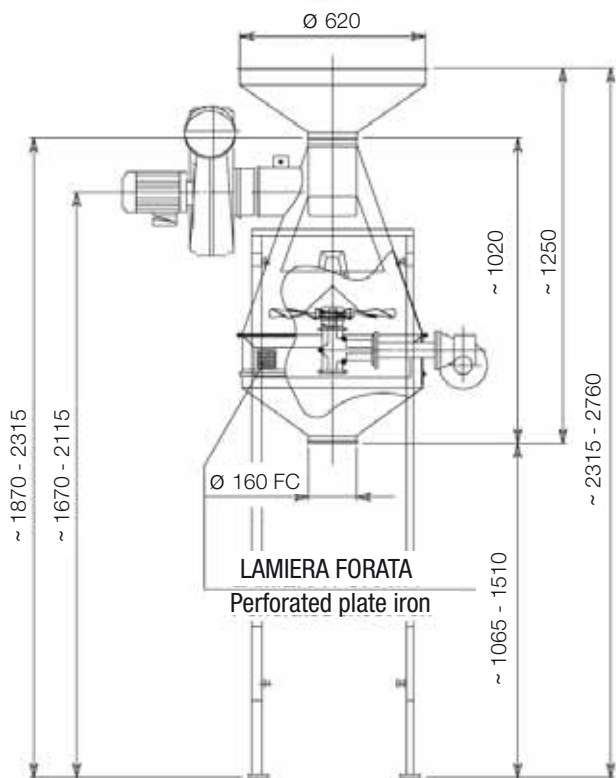


ESEMPI DI APPLICAZIONE APPLICATION EXAMPLES



PREPULITORI SEPARATORS

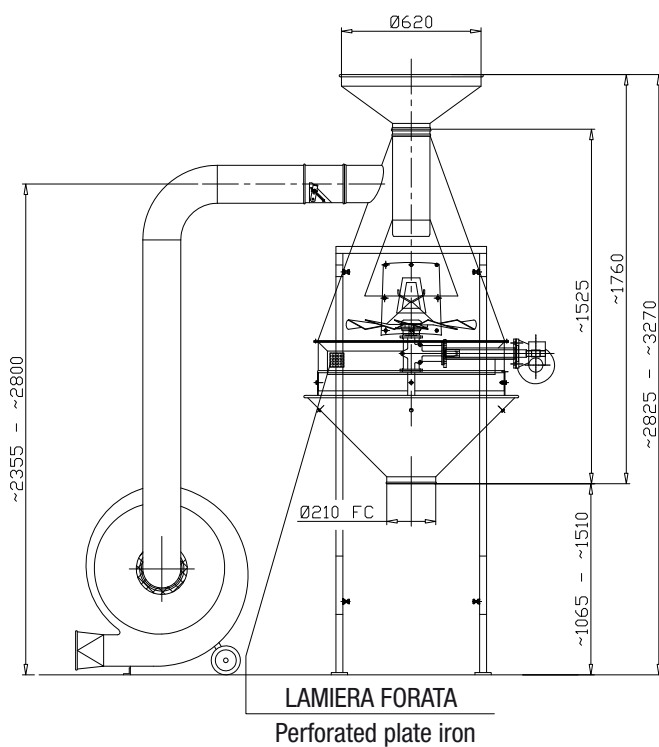
SISTEMA DI PULIZIA MEDIANTE ASPIRAZIONE PARTI LEGGERE MODELLO LP12 E MODELLO LP20 - DUST CLEANING SYSTEM MODEL LP12 AND MODEL LP20



LP12 SEMPLICE



LP20 GIREVOLE



PREPULITORI SEPARATORS

SISTEMA DI PULIZIA MEDIANTE ASPIRAZIONE PARTI LEGGERE MODELLO LP12 E LP20
CLEANING SYSTEM MODEL LP12 AND LP20

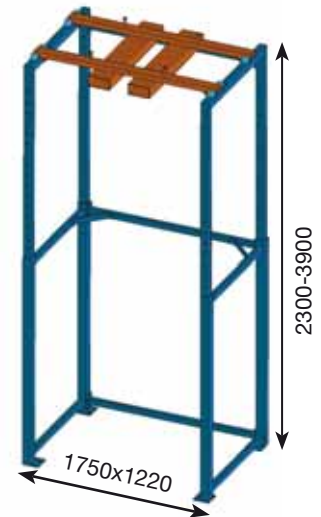
GRUPPO LP12
GIREVOLE COMPLETO



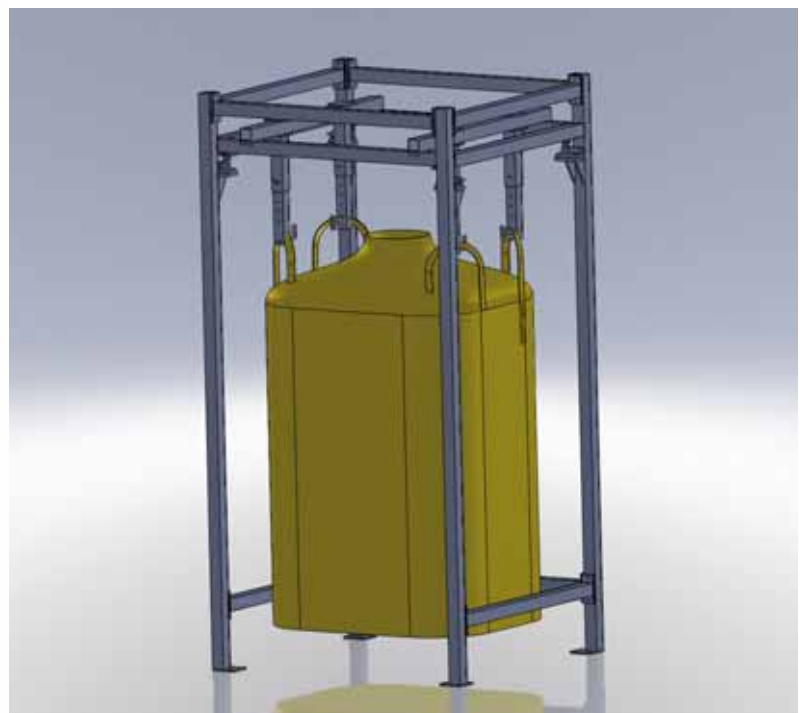
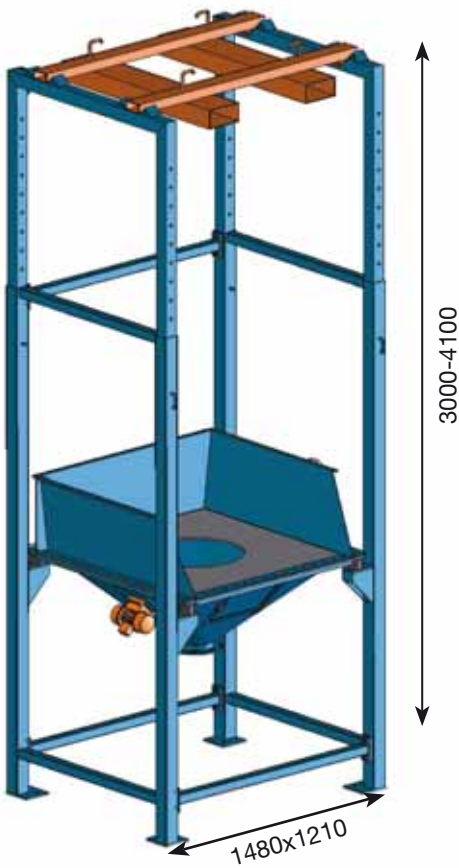
GRUPPO LP20
GIREVOLE COMPLETO



REGGISACCONI TELESCOPICI STRUCTURES FOR SACKS



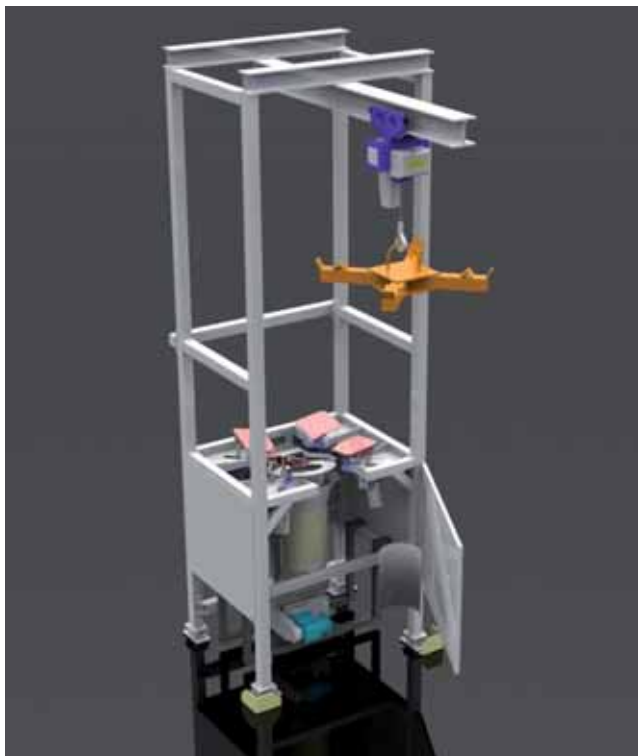
REGGISACCONE PESATO
BIG BAG FRAME WITH
WEIGHING CELLS



REGGISACCONI CON PARANCO STRUCTURES WITH CRANE

SPECIALE PER FILM PLASTICI, FLAKES E POLVERI

SPECIAL FOR PLASTIC FILM, PET
FLAKES OR POWDER



SPECIALE PER BISSIDO DI TITANIO

SPECIAL FOR TITANIUM DIOXIDE

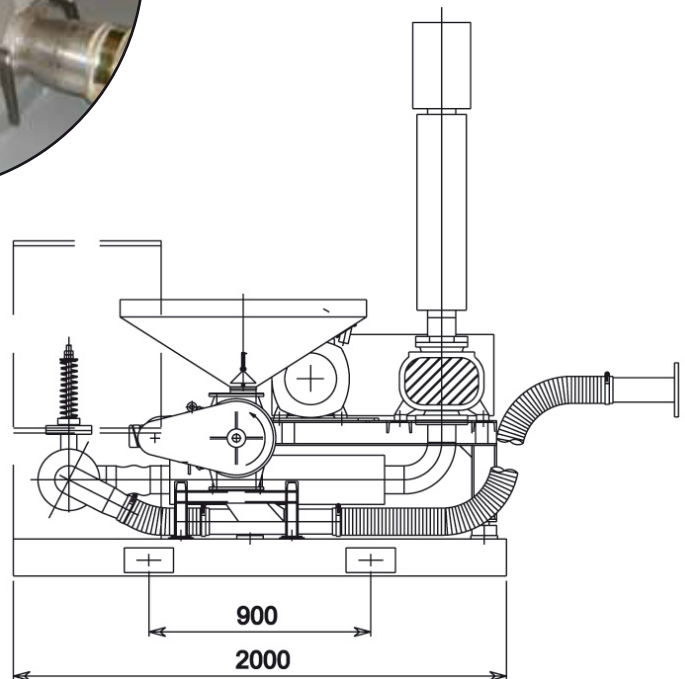
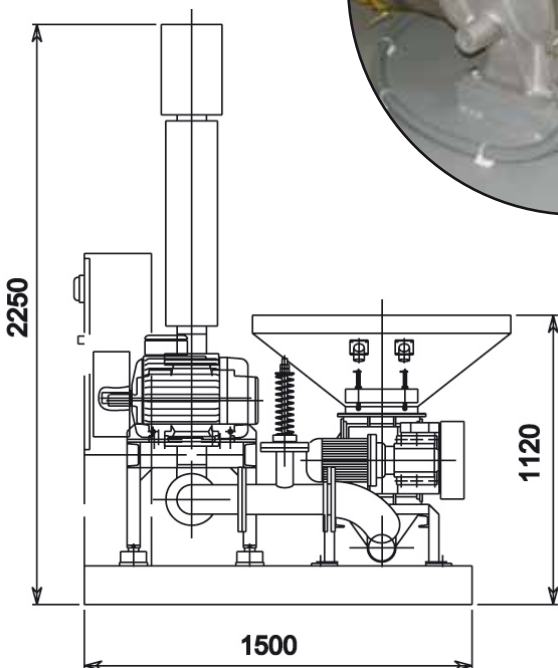


GRUPPO DI CARICO SILOS SILOS LOADING SYSTEM

**SISTEMA PER IL CARICO DEI SILOS DA BIG-BAGS,
SACCHETTI FINO A 14T/h A 20 MT. DI ALTEZZA**
SILOS LOADING SYSTEM TO CHARGE FROM 4 to 14T/h AT 20
METERS IN HIGH FROM BIG-BAGS, SACKS



Su richiesta AISI 316
On request AISI 316



GRUPPO DI CARICO SILOS SILOS LOADING SYSTEM

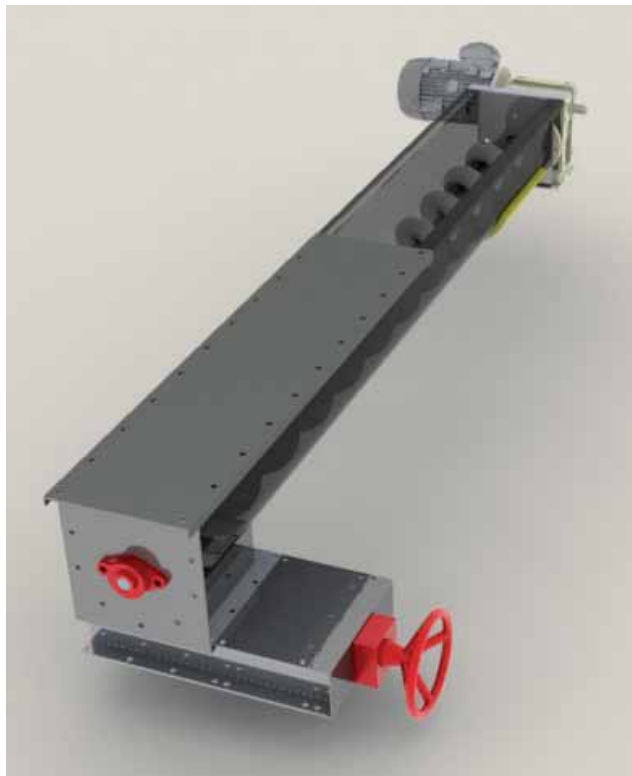
Versione insonorizzata
Soundproof box version



modello per aspirazione e carico
suction and load model

COCLEE CONVEYOR SCREWS

Coclee tubolari e a canale
Conveyor screws



TRAMOGGE DI STOCCAGGIO HOPPERS

TRAMOGGE CARRELLATE E SILETTI CON ESTRATTORE PER MATERIE PLASTICHE MACINATE LEGGERE E FILM

HOPPERS AND SMALL SILOS WITH EXTRACTOR FOR FILM AND LIGHT MILLED PLASTICS

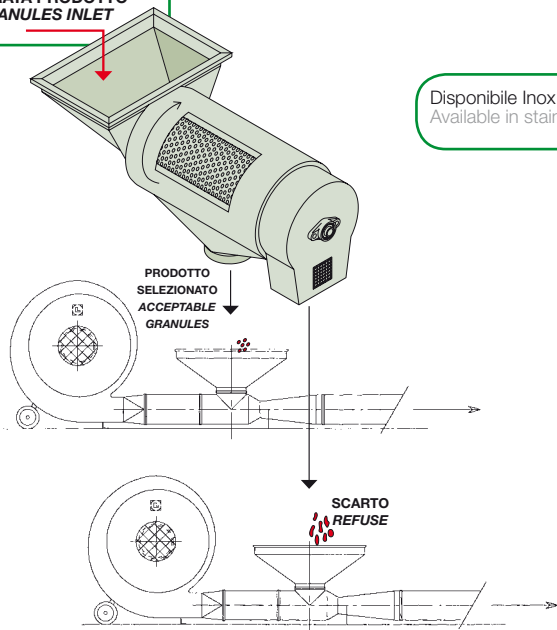
Misure su richiesta Sizes on request



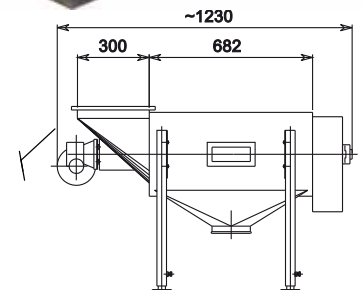
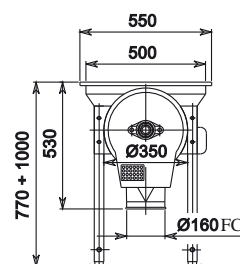
“MINI-ROTOR” SISTEMA DI PULIZIA E SEPARAZIONE

“MINI-ROTOR” SEPARATING AND CLEANING SYSTEM

ENTRATA PRODOTTO
GRANULES INLET



Disponibile Inox
Available in stainless steel



VENTILATORI BLOWERS

VENTILATORI BLOWERS

I nostri ventilatori sono adatti per i trasporti pneumatici fino a 4 ton./H. Il ventilatore può essere inserito in diversi tipi di impianti, dato il suo elevato volume d'aria è atto al trasporto di materiali granulari con p.s. da 0.2 a 1 ton./m.c. Alcuni ventilatori sono disponibili nelle versioni in acciaio inox.

Our blowers are suitable for pneumatic conveyance up to 4 ton./H. The blower can be fitted to different types of installations. Thanks to its high air volume it is suitable to convey granular materials with specific weight of 0.2-1 T/m³. Some blowers are available in stainless steel version.



ALUMINIUM MODEL F28/F40

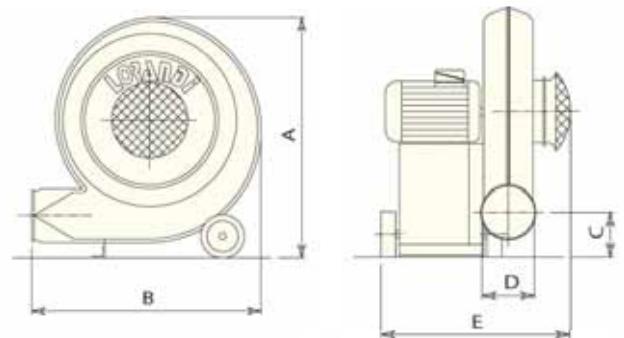


TIPO/TYPE	Mot. Kw.	Vol. Aria m ³ /h
F28	0.55	500
F40	1.1	1200
LPA10*	0.75	1700
L20	1.5	1900
LPA20 inox*	1.5	1900
L40	3	2600
L55	4	2600
LPA 55*	4	2600
L75	5,5	3200
L100	9,2	2400
L150	11	3000

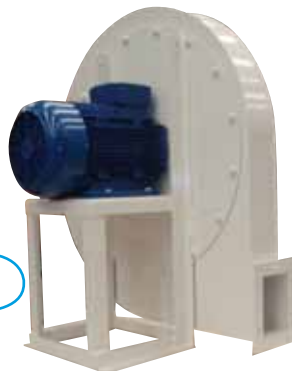
* PA = Flusso attraversato

TIPO/TYPE	A	B	C	D	E	Kg.
F28	473	433	72	100 FC	366	10
F40	538	530	85	100 FC	432	15
L10	567	465	150	160 FC	402	21
L20	685	650	125	160 FC	520	45
L40	815	740	110	160 FC	600	70
L55	850	800	120	160 FC	640	70
L75	850	770	120	160 FC	640	80
L100	1110	1000	160	180x125	590	165
L150	1110	1000	160	180x125	725	215

FLUSSO ATTRAVERSATO LPA



MODELLO L100-L150



SILENZIATORE ASPIRAZIONE ESAGONALE HEXSAGONAL SILENCERS



IRIDE DI REGOLAZIONE REGULATION DIAPHRAGM

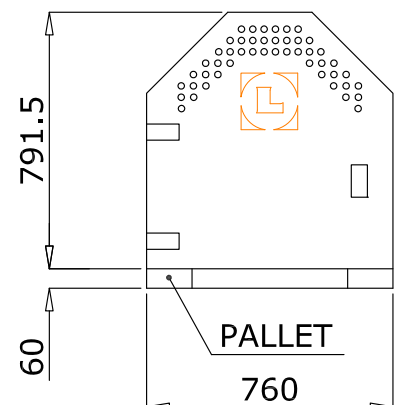
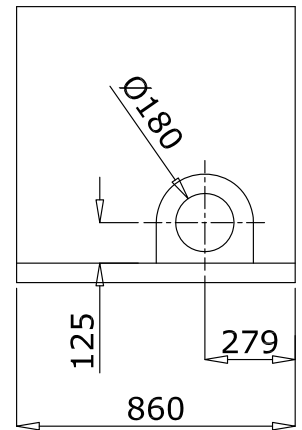
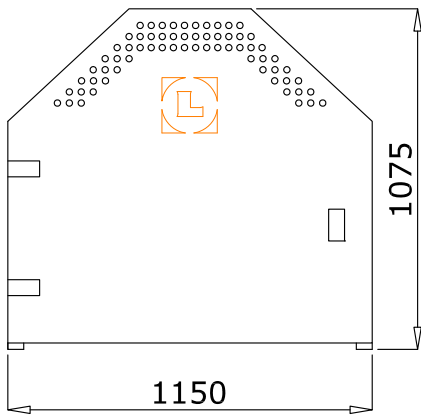
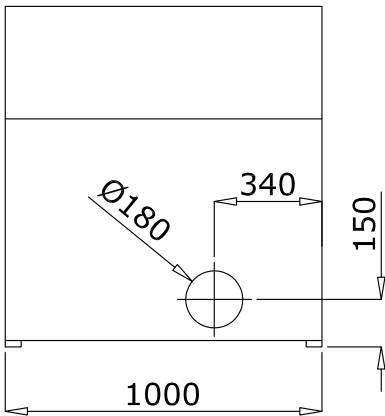


SILENZIATORE ASPIRAZIONE SILENCERS



A richiesta versioni 60 Hz
On request 60 Hz version

CABINA ACUSTICA ACOUSTIC CABIN



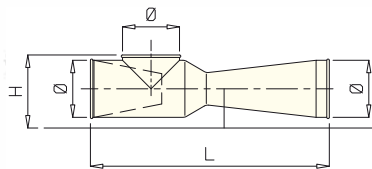
INIETTORI E VALVOLE STELLARI

INJECTORS AND ROTARY VALVES

INIETTORI - INJECTORS IN Ø 100/160/210

Gli iniettori sono ideati per i ventilatori L 20-40-55 e per tutto il sistema di tubazioni D160 FastClip.

The injectors are suitable for our L 20-40-55 blowers and the complete D 160 FastClip piping system.

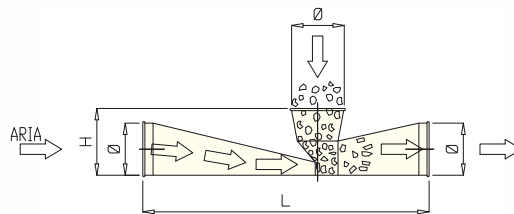


Ø 100 FC L=525 H=160/185
 Ø 160 FC L=710 H=215/270
 Ø 210 FC L=895 H=285

INIETTORI PER MATEROZZE

INJECTORS FOR RISERS

Ø 100 / Ø 160



Ø 100 FC L=560 H=110
 Ø 160 FC L=880 H=225



VALVOLE STELLARI MODELLO "PL"

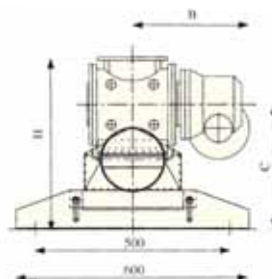
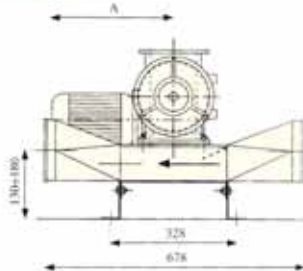
ROTARY VALVES

Costruita in ghisa o acciaio inox

Made in cast iron or in stainless steel

VERSION	180	230	270	300
KW	0,37	0,55	0,75	1,1
A	327	327	362	362
B	285	300	364	381
C	272/322	305/355	320/370	341/391
H	395/445	460/510	490/540	532/582

Dimensioni in mm, indicative e non impegnative.
 The dimensions in mm are indicative but not binding.



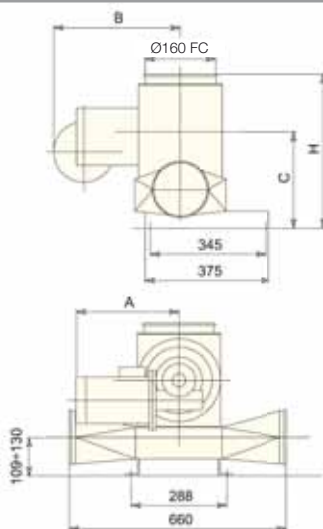
VALVOLE STELLARI IN LAMIERA STAMPATA

MODELLO "CAR"

ROTARY VALVES
 IN STAMPED PLATE

VERSION	CAR 20
A	383 MAX
B	367 MAX
C	278-299
H	446-467

Dimensioni in mm, indicative e non impegnative.
 The dimensions in mm are indicative but not binding.



SISTEMA DI TUBAZIONI FASTCLIP FASTCLIP PIPING SYSTEM WITH ACCESSORIES

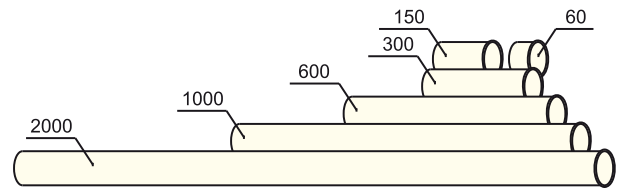
AVAILABLE: PAINTED / GALVANIZED / STAINLESS STEEL / SOUNDPROOF COVERING / CERAMIC TREATMENT

TUBI PIPES

DIAMETRI Ø 100 - 160 - 200 - 210 - 270

Per il trasporto pneumatico può essere adottato il ns. sistema di tubazioni LORANDI FC (Fast Clip). Questo offre una grandissima versatilità grazie alla vasta gamma di accessori, che consentono di eseguire ottimi impianti. Qualsiasi nostro impianto può essere sempre completamente modificabile grazie agli speciali morsetti rapidi "FC". La nostra produzione è completata dai sistemi Ø 100 - Ø 160 - Ø 200 - Ø 210 - Ø 270. Tutto il materiale è costruito in lamiera zincata o in Aisi 304, con la possibilità di rivestimenti insonorizzati per il rumore o rivestimenti ceramizzati per l'usura.

Our FC piping system can be used for pneumatic conveyance. It is extremely versatile owing to the wide range of accessories, which allows to perform excellent installations that could be always modified by using for our special FC clamps. Our production is completed with Ø 100, Ø 160, Ø 200, Ø 210, Ø 270. The equipment is made of galvanized steel or Aisi 304 Steel, with the possibility to have soundproof covering to reduce noise or ceramic treatment wearproof.



CURVE E TUBI INSONORIZZATI CON ATTACCO "FC" SOUND PROOF PIPES AND BENDS

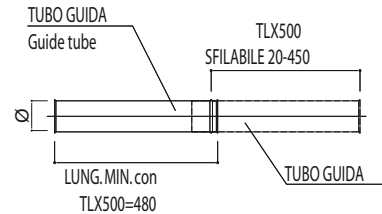
- GUAINA DI GOMMA
Rubber sheath
- LAMINA DI PVC
PVC foil
- LAMINA DI PIOMBO
Lead foil
- ISOLANTE IN POLIETILENE ESPANSO
Insulator in expanded PE
- TUBO
Pipe



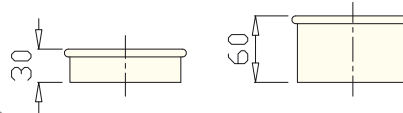
TUBO TELESCOPICO TELESCOPIC PIPES



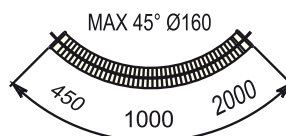
Ø
100
160
210
270



INIZIALI TUBO INITIALS FOR PIPE Ø 100 - 160 - 200 - 210 - 270 ZINCATI - NERI GALVANIZED - BLACK



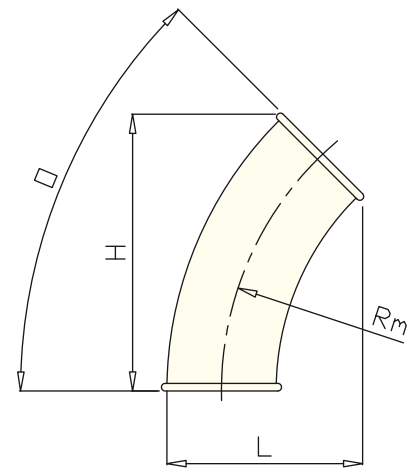
TUBO METALLICO FLEX METAL FLEX PIPE



SISTEMA DI TUBAZIONI FASTCLIP FASTCLIP PIPING SYSTEM WITH ACCESSORIES

AVAILABLE: PAINTED / GALVANIZED / STAINLESS STEEL / SOUNDPROOF COVERING / CERAMIC TREATMENT

CURVE BENDS



CURVE Ø 100 ZINCATE GALVANIZED BENDS				
°	H	L	Rm	
5	np	np	300	
15	95	110	300	
30	175	140	300	
45	250	180	300	
60	305	230	300	
90	350	350	300	

CURVE Ø 160 ZINCATE GALVANIZED BENDS				
°	H	L	Rm	
5	80	175	480	
15	145	175	480	
30	280	210	480	
45	400	280	480	
60	485	360	480	
90	560	560	480	
90	350	350	240	

CURVE Ø 210 ZINCATE GALVANIZED BENDS				
°	H	L	Rm	
5	np	np	605	
15	190	230	605	
30	360	285	605	
45	510	360	605	
60	625	470	605	
90	720	720	605	
90	375	375	200	

CURVE Ø 270 ZINCATE GALVANIZED BENDS				
°	H	L	Rm	
5	np	np	615	
15	190	230	615	
30	360	285	615	
45	510	360	615	
60	625	470	615	
90	720	720	615	
90	375	375	200	

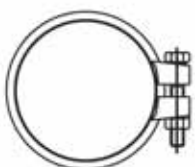
CURVE Ø 100 INOX STAINLESS STEEL BENDS				
°	H	L	Rm	
5	np	np	500	
15	260	130	500	
30	390	190	500	
45	495	275	500	
60	620	380	500	
90	670	670	500	
90	265	265	215	
90	910	910	800	
90	1110	1110	1000	

CURVE Ø 160 INOX STAINLESS STEEL BENDS				
°	H	L	Rm	
5	np	np	580	
15	170	180	580	
30	330	225	580	
45	465	310	580	
60	575	410	580	
90	660	660	580	

CURVE Ø 210 INOX STAINLESS STEEL BENDS				
°	H	L	Rm	
5	np	np	605	
15	190	230	605	
30	360	285	605	
45	510	360	605	
60	625	470	605	
90	720	720	605	
90	375	375	200	

QUOTE INDICATIVE + 0 - 5 mm

ANELLI FASTCLIP CLAMPS Ø 100 - 160 - 200 - 210 - 270 ZINCATI/AISI 304 GALVANIZED OR STAINLESS STEEL



SISTEMA DI TUBAZIONI FASTCLIP FASTCLIP PIPING SYSTEM WITH ACCESSORIES

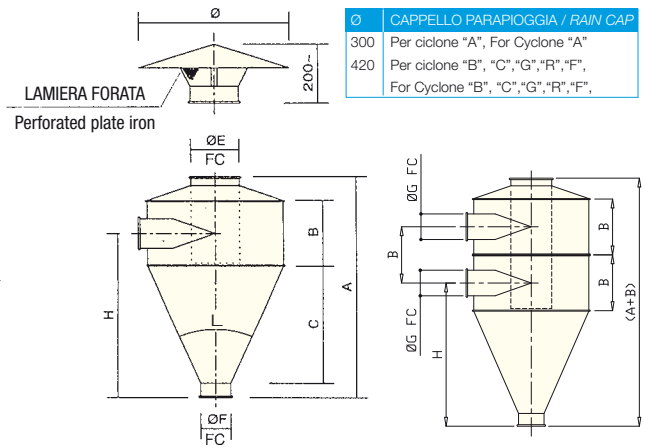
AVAILABLE: PAINTED / GALVANIZED / STAINLESS STEEL / SOUNDPROOF COVERING / CERAMIC TREATMENT

CICLONI CYCLONES

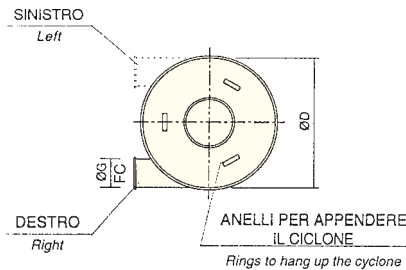
MODELLO	"A"	"B"	"C"	"G"	"R"	"F"
A	750	625	1355	895	955	1250
B	220	265	265	265	265	450
C	400	220	950	490	550	720
ØD	450	600	600	600	600	800
ØE	160FC	270FC	270FC	270FC	270FC	270FC
ØF	100FC	160FC	160FC	210FC	160FC	210FC
ØG	100FC	160FC	160FC	160FC	160FC	210FC
H	560	400	1130	670	730	1090
L	47°	90°	26°	43°	44°	45°

Dimensioni in mm, indicative e non impegnative.
The dimensions in mm are indicative but not binding.

Disponibili in lamiera zincata o acciaio inox, per il tipo R è prevista anche una versione in manganese. "A", "B", "C", "G", "R" anche in versione rinforzata (sia zincata che inox). Versione "F" solo rinforzata.
Available in both galvanized steel and stainless steel; for the Type R is also provided a manganese version. A, B, C, G and R also in strengthened version (galvanized and stainless); "F" type only in strengthened version.



Ø	CAPPELLO PARAPIOGGIA / RAIN CAP
300	Per ciclone "A", For Cyclone "A"
420	Per ciclone "B", "C", "G", "R", "F", For Cyclone "B", "C", "G", "R", "F",



IPERCICLONI ELICOIDALI SEPARATORI DA Ø 350 A Ø 1800 HELICOIDAL SUPERSEPARATING CYCLONES FROM Ø 350 TO Ø 1800

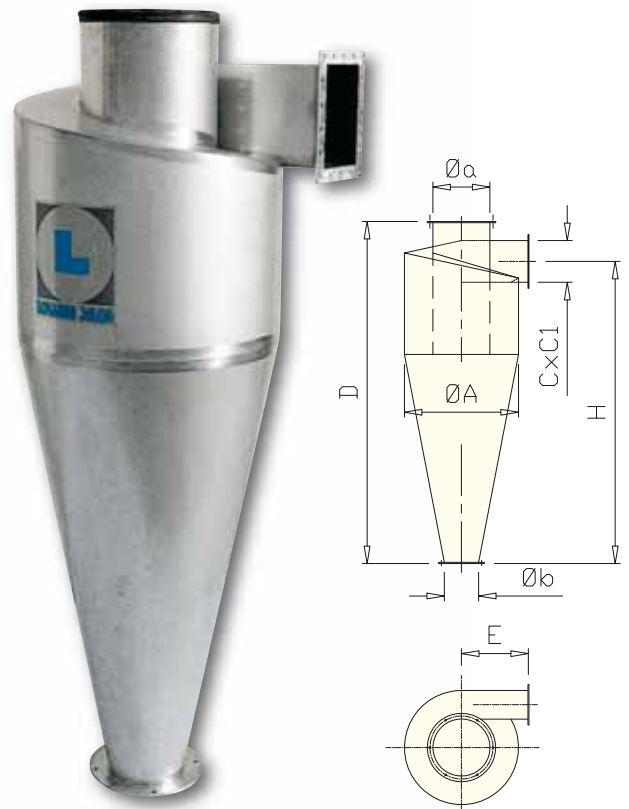
VERSION	35	40	50	60	70	80
Ø A	350	400	500	600	700	800
D	1120	1400	1600	1800	2000	2350
E	250	250	300	350	400	450
H	940	1220	1400	1590	1780	2100
Ø a	160	200	250	300	350	400
Ø b	120	100x160	150	180	200	220
C x C1	Ø100 OK		200x125	220x150	240x175	300x200

VERSION	CODE					
ZINC	282.CZ.035	282.CZ.040	282.CZ.050	282.CZ.060	282.CZ.070	282.CZ.080
INOX	282.CX.035	282.CX.040	282.CX.050	282.CX.060	282.CX.070	282.CX.080

VERSION	90	100	120	140	160	180
Ø A	900	1000	1200	1400	1600	1800
D	2600	2900	3500	3800	4100	4500
E	500	550	650	750	850	950
H	2335	2625	3200	3485	-	4100
Ø a	450	500	600	700	800	900
Ø b	250	300	350	400	450	500
C x C1	330x225	350x250	400x300	430x350	500x400	600x450

VERSION	CODE					
ZINC	282.CZ.090	282.CZ.100	282.CZ.120	282.CZ.140	282.CZ.160	282.CZ.180
INOX	282.CX.090	282.CX.100	282.CX.120	282.CX.140	282.CX.160	282.CX.180

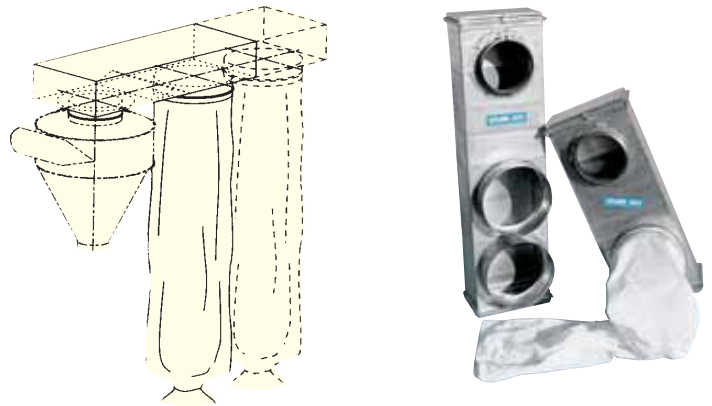
Dimensioni in mm, indicative e non impegnative. Dim. flangiature a richiesta.
The dimension in mm are indicative but not binding.



SISTEMA DI TUBAZIONI FASTCLIP FASTCLIP PIPING SYSTEM WITH ACCESSORIES

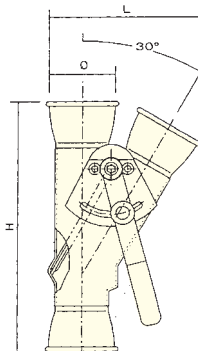
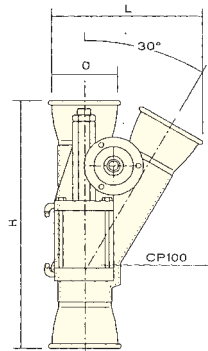
AVAILABLE: PAINTED / GALVANIZED / STAINLESS STEEL / SOUNDPROOF COVERING / CERAMIC TREATMENT

COLLETTORI PER CICLONI COLLECTORS FOR CYCLONES WITH HOSES



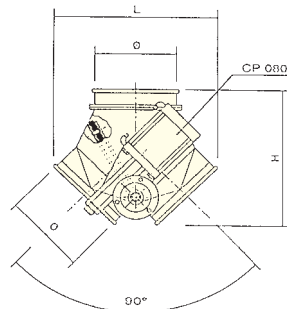
DEVIATORI 30° A TENUTA CON ATTACCO "FC" 2 WAYS 30° MAN-PN DIVERTERS

Ø	H	L
100	345	235
160	530	355
210	780	495
270	985	590

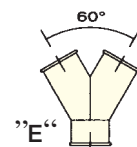
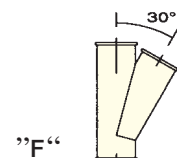
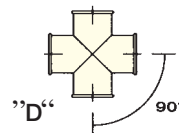
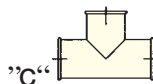
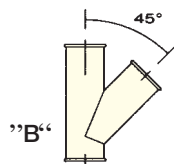
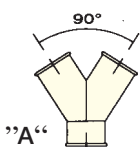


DEVIATORE 90° A TENUTA CON ATTACCO FC 2 WAYS 90° MAN-PN DIVERTERS

Ø	H	L
100FC	220	275
160FC	270	330
210FC	320	440



DIRAMAZIONI BRANCHES FOR VENTILATION AND PNEUMATIC CONVEYING Ø 100 - 160 - 200 - 210 - 270

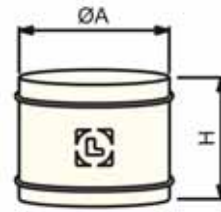


ACCESSORI PER SISTEMA FASTCLIP FASTCLIP PIPING SYSTEM WITH ACCESSORIES

AVAILABLE: PAINTED / GALVANIZED / STAINLESS STEEL / SOUNDPROOF COVERING / CERAMIC TREATMENT

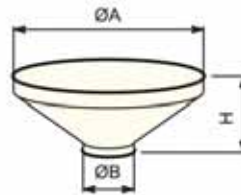
ESTENSIONI PER TRAMOGGE EXTENSION FOR HOPPER

ØA	H
400	250
620	380
400	250
620	380



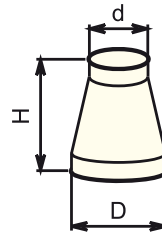
TRAMOGGE HOPPER

ØA	ØB	H
400	100FC	218
400	160FC	215
620	160FC	235
620	210FC	245



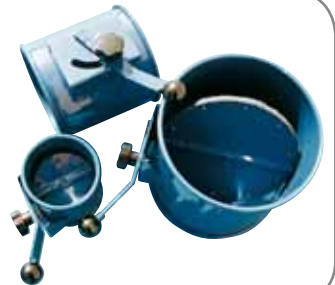
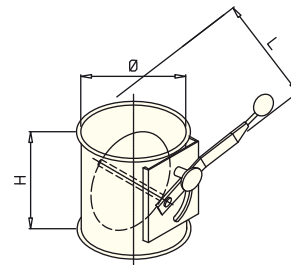
RIDUZIONI REDUCTIONS

D	d	H
160	100	114
210	160	105
270	160	120
270	210	116



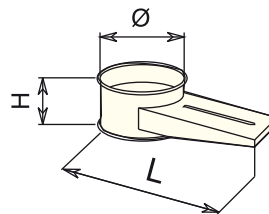
VALVOLE A FARFALLA MANUALI BUTTERFLY VALVES

Ø	H	L
100	120	190
160	160	230
210	205	280
270	275	340



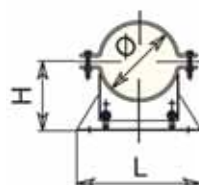
PERSIANE MANUALI MANUAL SHUTTERS

Ø	H	L
100FC	85	250
160FC	100	350
210FC	125	460
270FC	150	600



PIED. REG DI FISSAGGIO E COLLARI PER TUBAZIONI PIPE FOOT FOR FIXING

Ø	H	L
100	100 / 135	200
160	120 / 165	262
210	160 / 210	262
270	190 / 240	350

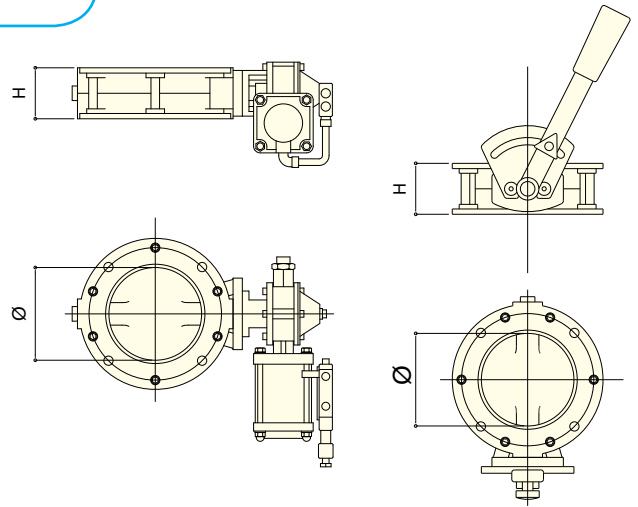


SISTEMA DI TUBAZIONI FASTCLIP FASTCLIP PIPING SYSTEM WITH ACCESSORIES

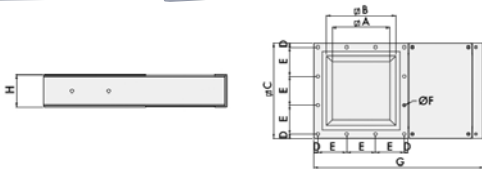
AVAILABLE: PAINTED / GALVANIZED / STAINLESS STEEL / SOUNDPROOF COVERING / CERAMIC TREATMENT

VALVOLE A FARFALLA PNEUMATICHE E MANUALI IN ALLUMINIO ALUMINIUM BUTTERFLY VALVES MAN-PN

Ø	H
100	77
150	77
200	77
250	77
300	77

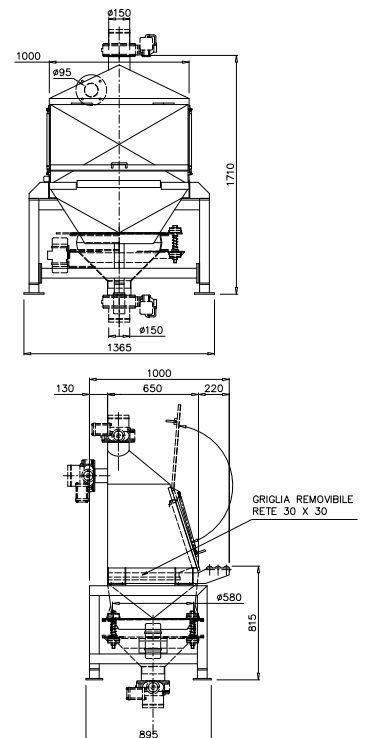


VALVOLE A GHIGLIOTTINA VALVES

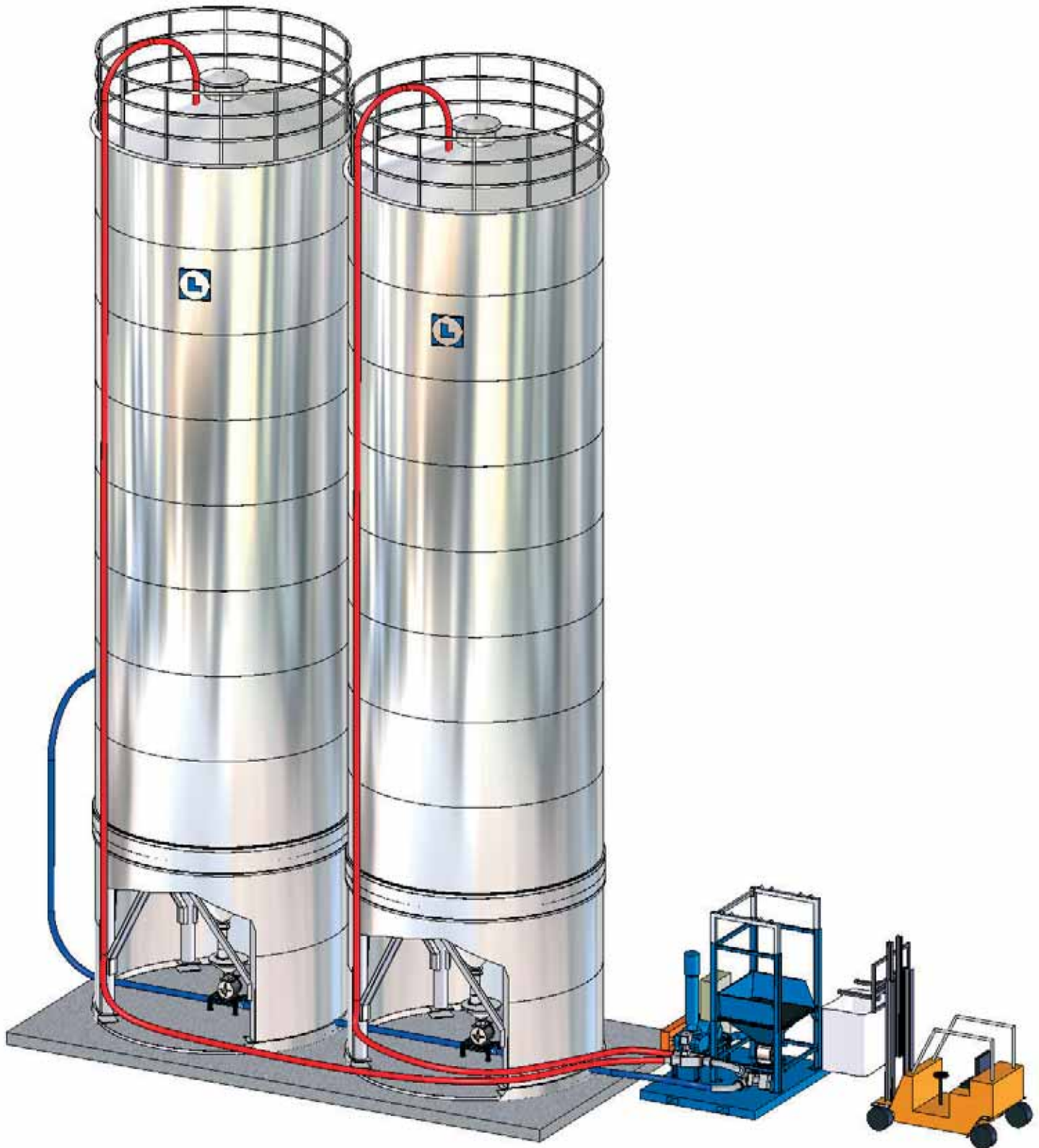


TIPO/ TYPE	A	B	C	D	E	N°E	Ø F	Bolts Bulloni	G	H	kg
SLY 150	120	175	261	15,5	115,0	2	12,5	M10	455	113	14
SLY 200	170	225	311	15,5	93,3	3	12,5	M10	555	113	18
SLY 250	220	275	361	15,5	110,0	3	12,5	M10	650	113	22
SLY 300	270	325	431	23,0	128,3	3	12,5	M10	765	113	30
SLY 350	320	375	481	18,0	89,0	5	12,5	M10	900	125	40
SLY 400	370	425	531	15,5	100,0	5	12,5	M10	1.000	125	46

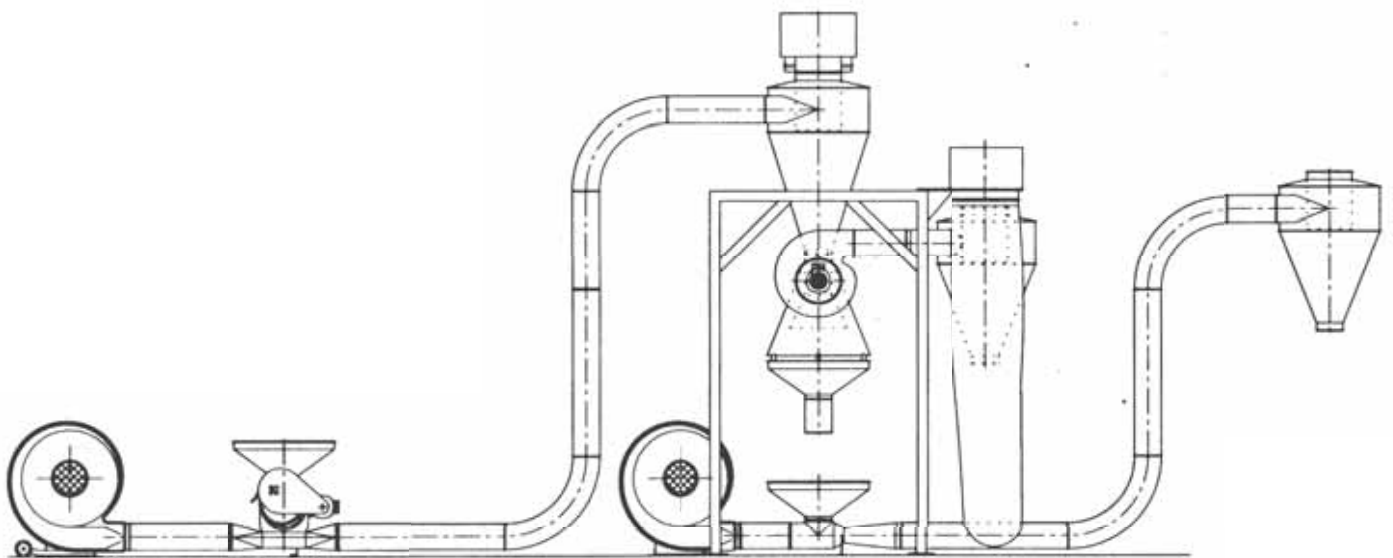
TRAMOGGIA ROMPISACCHI MANUALE MANUAL BAGS HOPPER



*Lorandi Silos è specializzata nell'impiantistica
chiavi in mano per il trasporto di polveri e granuli.
Lorandi Silos is specialized in turnkey solutions
for your material handling needs.*



www.lorandisilos.it



LORANDI SILOS

MATERIAL HANDLING SOLUTION

LORANDI SILOS S.r.l. - 25131 BRESCIA - ITALIA
 Sede Legale: Via Verziano, 39 - Stabilimenti: Via Verziano, 43 - Via del Mella, 27
 Tel. +39 0302681531 Fax +39 0302680916 E-mail: info@lorandisilos.it www.lorandisilos.it

YOUR RELIABLE PARTNER CLOSE BY:



SIPA/SOBITSCH
 THEODOR-KORNER-STRASSE, 120/A
 8010 GRAZ AUSTRIA
 TEL. 0043/316263060
 FAX. 0043/316263070
www.sipa.at - www.sobitsch.at



PRO-TEC
 C/ ALT CAMP, 16
 POL. IND. MOLI D'EN SERRA
 43710 SANTA OLIVA
 (TARRAGONA) ESPANA
 TEL. 0034/977/157111
 FAX. 0334/977/664105
www.ptfpro-tec.com



SERME PLASTICS
 RUE DE BALLON, 44
 68210 VALDIEU-LUTRAN
 FRANCIA
 TEL. 0033/389252382
 FAX. 0033/389252382
serge.caoduro@wanadoo.fr