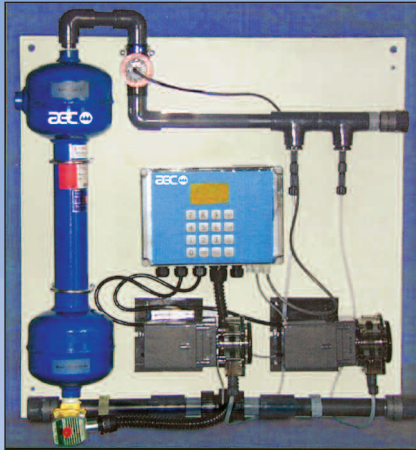




Application Engineering®

PROVIDING SOLUTIONS, NOT JUST EQUIPMENT



TOWER WATER MANAGEMENT

Untreated cooling tower water can rob your process cooling system of heat transfer efficiency and cooling capacity. AEC has the answer. Our model TWMV280 Tower Water Management System provides four-way protection for evaporative cooling systems - all in one compact, fully automatic package that's nearly maintenance free. The TWMV280 is shipped with all components pre-mounted and pre-plumbed. All components are mounted on a 30" x 30" enameled steel panel. Once the system is mounted, plumbing completed, and power supplied, the TWMV280 is ready for operation.

COMPLETE WATER TREATMENT SYSTEM

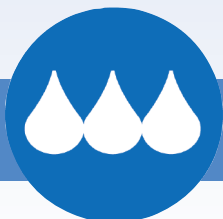
- The Model TWMV280 is factory assembled, complete with self-priming peristaltic pumps
- Full automatic control includes a programmable "menu-driven" electronic controller with 2-year warranty protection

FREE QUARTERLY ANALYSIS

Each AEC system is preset before shipment to precisely match the tested conditions of your application. And only AEC provides a free quarterly analysis of process water conditions. If required, we recommend minor adjustments to maintain peak water treatment efficiency.

HOW FOUR-WAY TREATMENT WORKS TO PROTECT VALUABLE EQUIPMENT

- Phase One monitors make-up water flow and meters an accurate blend of scale and corrosion control agents into the tower water system.
- Phase Two prevents microbiological fouling, metering microbicide at scheduled intervals, using a programmable 24-hour/14-day timer.
- Phase Three automatically removes suspended solids via a centrifugal separator, coupled to a solenoid valve.
- Phase Four automatically regulates the concentration of dissolved solids by means of a conductivity control system that activates the bleed valve and purges water from the cooling tower system.



TOWER WATER MANAGEMENT SYSTEMS

www.aecinternet.com

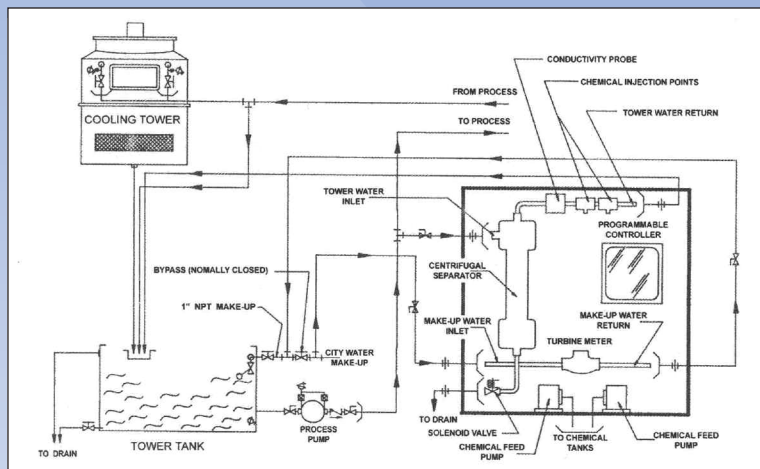


OPTIONAL HEAVY-DUTY FILTRATION

Sand and Gravel Filters provide heavy-duty filtration to protect equipment by trapping dirt and other particulate matter. The AEC unit contains a precharged bed of sand and gravel that must be cleaned periodically. Cleaning is easily accomplished by periodically reversing the flow of water through the filter vessel. Reverse flow "fluffs" the sand bed, freeing dirt and entrapped material, which is directed to a waste line. Automatic "backwash" can be achieved with a timer (Model SG250A), or by a pressure differential switch (Model SG250P).

Full flow Bag Filters are an economical way to remove dirt and particulate from your cooling water system. Complete assembly includes bypass, pressure gauges and 225 micron filter bags. An optional pressure differential alarm is also available.

Description	Part No.
Centrifugal Separator	# 9050
Probe & Feed Assembly	# 9990
Conductivity Sensor	AO544928
Programmable Controller	1575CTRL
Peristaltic Metering Assembly	AO544931
Solenoid Valve Assembly	AO544932
1" Turbine Meter	AO544927
Hall Effect Cable	AO544929
Pump Repair Kit	PX01142



TYPICAL TOWER WATER MANAGEMENT SYSTEM SCHEMATIC



Full Flow Bag Filters



Sand and Gravel Filters

www.aecinternet.com
aecweb@corpemail.com

AEC is committed to a continuing program of product improvement. Specifications, appearances and dimensions are subject to change without notice.
 © 2011 AEC Bulletin AE7-105.5 Printed in USA



TOWER WATER MANAGEMENT SYSTEMS



Global Headquarters:

AEC Schaumburg
 1100 E. Woodfield Rd
 #588
 Schaumburg, IL 60173
 Tel: +1 847 273 7700
 Fax: +1 847 273 7804

AEC New Berlin
 2900 S. 160th Street
 New Berlin, WI 53151
 Tel: +1 262 641 8610
 Fax: +1 262 641 8653



AEC Suzhou
 109 Xingpu Road SIP
 Suzhou, China 215126
 Tel: +86 512 8717 1919
 Fax: +86 512 8717 1916



AEC Warsaw
 ul.Dziakowa 115
 02-234 Warszawa
 Tel: + 48 22 390 9720
 Fax: + 48 22 390 9724



AEC India
 Regus, Level 2, Connaught Place
 Bund Garden Road, Pune 41100,
 India
 Tel: +91 20 4014 7575/40147615
 Fax: +91 93 7115 4045