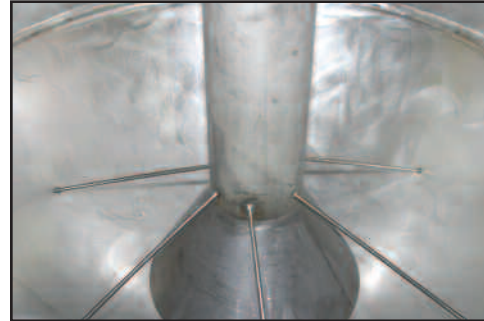




# WHITLOCK-MATERIAL HANDLING

## SD SERIES LARGE DRYING HOPPERS



### STANDARD FEATURES

- Unique mass flow design
- Carbon steel construction inside and aluminum cover outside
- Integral welded carbon steel frame
- 2" (5 cm) fiberglass insulation on insulated models
- Hinged access door with long sight glass
- Inlet/outlet tube stubs should be specified when ordering
- Slide gate
- Drain port

### SD SERIES LARGE DRYING HOPPERS 12-425 CU. FT. (340-12,035 LITERS)

Standard models are constructed of insulated carbon steel and contain no material hang-up points with solid internal walls. Value-added standard equipment includes heavy duty slide gate, convenient lifting lugs and hopper cover. No gaskets are used in the SD hoppers, which allows for a precision, laser cut door.

### OPTIONAL FEATURES

- Stainless steel construction (inside and out)
- Sensors, less controls: Single level RF-style sensor 115 or 230V; dual level RF-style sensor 115 or 230 V; demand level sensor 115V
- Air-operated discharge slide gate
- Adapter to mount SRC 30/60 vacuum receiver onto SD12-30



1100 E Woodfield Road, Suite 588  
Schaumburg, IL 60173 USA  
Tel. 847-273-7700 Fax 847-273-7804

www.aecinternet.com



**WHITLOCK/  
MATERIAL  
HANDLING**



**HEAT & COOL**



**BLEND &  
RECLAIM**



**NELMOR/  
GRANULATE**



**DOWNSTREAM  
EXTRUSION**



**AUTOMATE**



**SYSTEMS  
CONTRACTING**



**SERVICE**

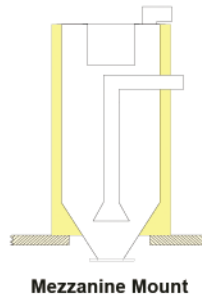
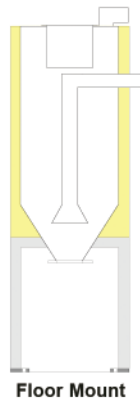
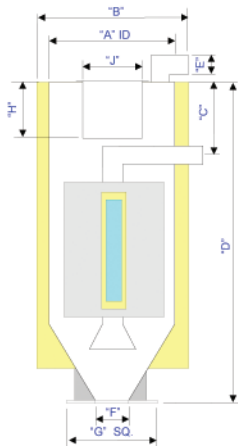


# WHITLOCK-MATERIAL HANDLING

## SD SERIES LARGE DRYING HOPPERS

### SPECIFICATIONS

Model	Size, cu. ft. (l)	Weight, lbs. (kg)	A	B	C	D	E	F	G	H	J
SD12	12 (340)	420 (191)	24	28	11	68	3	3	10	9	10 1/8
SD17	17 (481)	595 (270)	24	28	11	88	3	3	10	9	10 1/8
SD23	23 (651)	805 (365)	30	34	11	81	3	3	10	9	10 1/8
SD30	30 (850)	1050 (476)	30	34	11	99	3	3	10	9	10 1/8
SD45	45 (1274)	1575 (714)	40	44	15	100	3	5	16 1/4	12	17-1/8
SD60	60 (1699)	2100 (953)	40	44	35	120	5	5	16 1/4	12	17-1/8
SD75	75 (2124)	2625 (1191)	40	44	56	141	5	5	16 1/4	12	17-1/8
SD90	90 (2549)	3150 (1429)	50	54	23	126	8	5	16 1/4	12	17-1/8
SD135	135 (3823)	4725 (2143)	50	54	52	163	8	5	16 1/4	12	17-1/8
SD180	180 (5097)	6300 (2858)	64	68	63	156	8	5	16 1/4	12	17-1/8
SD240	240 (6796)	8400 (3810)	64	68	92	185	10	5	16 1/4	12	17-1/8
SD300	300 (8495)	10,500 (4763)	74	78	75	186	10	5	16 1/4	12	17-1/8
SD425	425 (12,035)	14,875 (6747)	74	78	114	225	10	5	16 1/4	12	17-1/8



1100 E Woodfield Road, Suite 588  
 Schaumburg, IL 60173 USA  
 Tel. 847-273-7700 Fax 847-273-7804

www.aecinternet.com



**WHITLOCK/  
 MATERIAL  
 HANDLING**



**HEAT & COOL**



**BLEND &  
 RECLAIM**



**NELMOR/  
 GRANULATE**



**DOWNSTREAM  
 EXTRUSION**



**AUTOMATE**



**SYSTEMS  
 CONTRACTING**



**SERVICE**